

# Our 2020 targets

TITAN first began reporting on non-financial performance in Greece in 1983 and as a Group in 2003. Since then, we have demonstrated significant progress across all three areas of sustainability: economic, environmental and social. While proud of our achievements, we recognize that there is still work to do, and we are committed to continuing to set stretch targets that will drive further improvement.

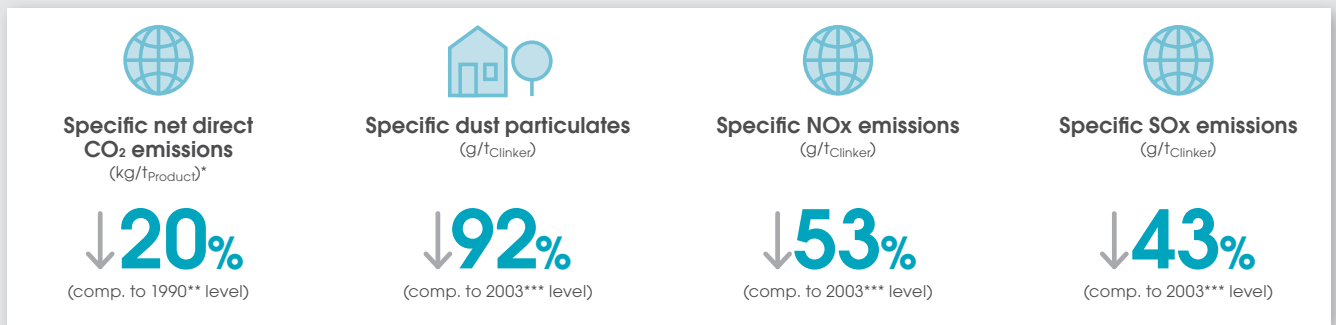
In 2017, we extended our sustainability targets for 2020 and set new ones that reflect our ambition to be in line with global leaders of the industry on the environmental pillar and build on our distinctive approach to social engagement at a local level. Our new targets underline TITAN's commitment to maintain our advanced level of performance on minimizing SOx, NOx and dust emissions, while continuing to focus on further reducing CO<sub>2</sub> emissions. To meet this

aim, in 2017 we developed a new, structured, quantitative, group-wide methodology, the "TITAN CO<sub>2</sub> Initiative." We have also set additional targets addressing the need for a holistic approach to environmental sustainability, including efforts to improve energy efficiency and maintain a robust performance on biodiversity and land management.

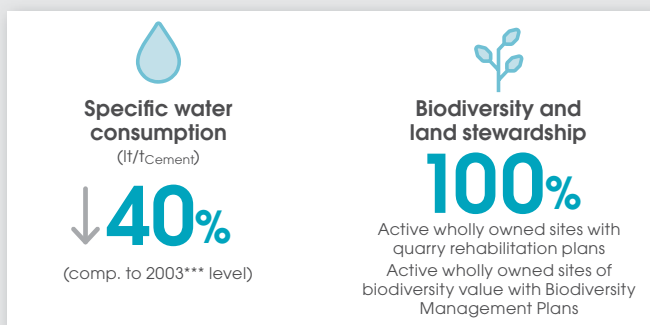
We also reaffirmed our commitment to reduce our Lost Time Injuries Frequency Rate (LTIFR), aiming to be in the top 25% of WBCSD/CSI members.

To support the Group's long-term commitment to the UN's 2030 Agenda for Sustainable Development, TITAN directly links its 2020 targets and priorities with the SDGs that have been identified by the materiality assessment process as the most relevant to the business. This is presented in the table below.

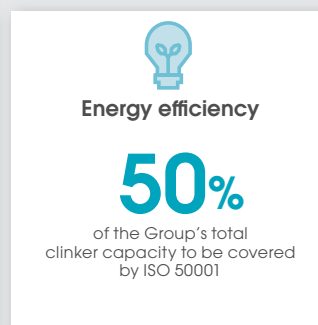
## SUSTAINABILITY PERFORMANCE 2020 TARGETS



SDGs: 12, 13, 17



SDGs: 6, 11, 15, 17



SDGs: 7, 17



SDGs: 3, 17



SDGs: 3, 4, 9, 11, 17

### SDG key



\* Product equals cementitious product as defined by WBCSD/CSI.  
 \*\* 1990 is the base year for CO<sub>2</sub> emissions, in line with the Kyoto protocol.  
 \*\*\* 2003 is the base year for environmental data other than CO<sub>2</sub> emissions.